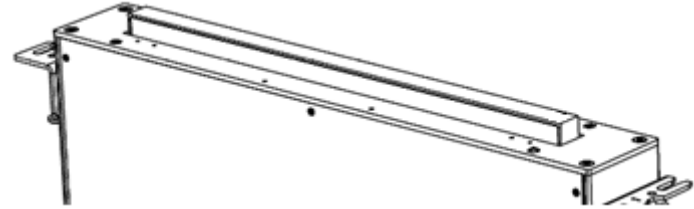




- Mounting Guide Pg. 2-8
- Veneer Guide (Optional) Pg.9-15

INTRODUCTION

The DB2 and DB1Twin monitors are designed to be mounted from below the table. Included in this version are all necessary brackets.

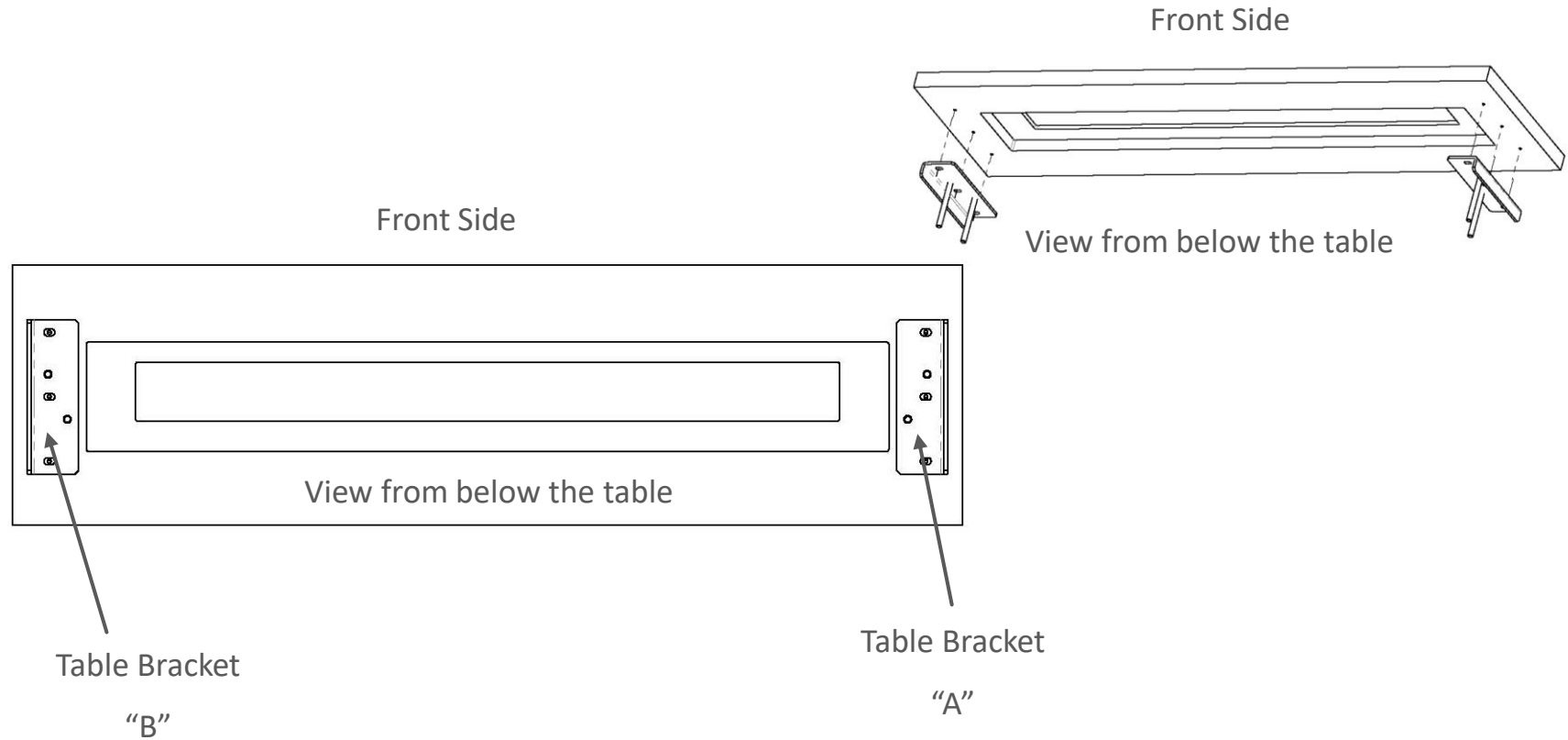


PATTERN HOLE

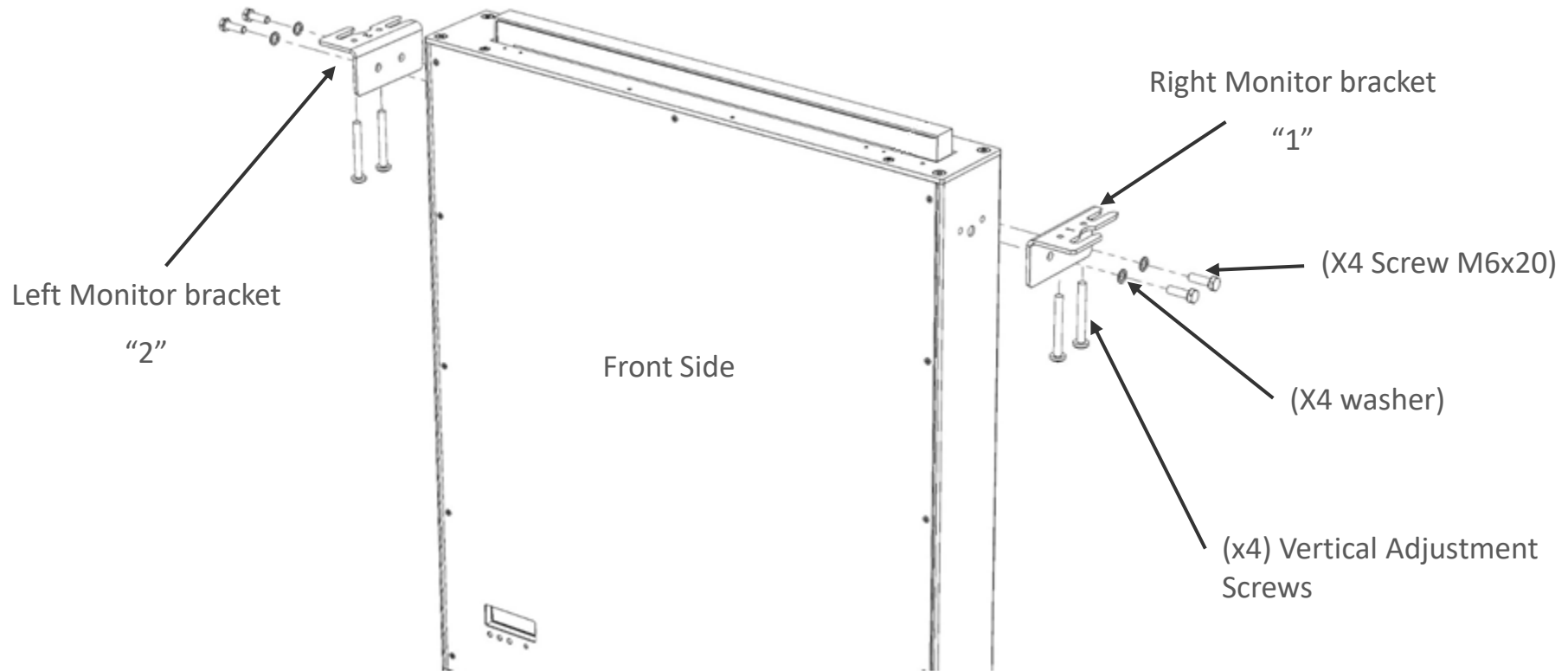
Pattern hole dimensions for milling are specified in the corresponding drawing. The milling of the furniture has to be done from below.

ATTENTION

Manipulation of the product should be avoided, no stress should be applied to the product except from the instructions given in this document. Cutting, drilling, soldering, adding of electrical and mechanical components can cause danger and should be avoided by all mean. Not complying with these direction will result in a lost of the Arthur Holm warranty. Albiral Display Solution S.L. shall not be held liable for any loss or injury incurred as a result of modifications made to goods by anyone other than the supplier or the supplier's authorised representative without the supplier's written permission. Such modifications shall be deemed to terminate any further guarantee obligations. Compensation will not be paid for wages, loss of profit, waste of time, packing and transport or any financial liability resulting from defects in the goods. (Albiral Display Solutions shall not be liable for any loss or injury caused by negligence.)

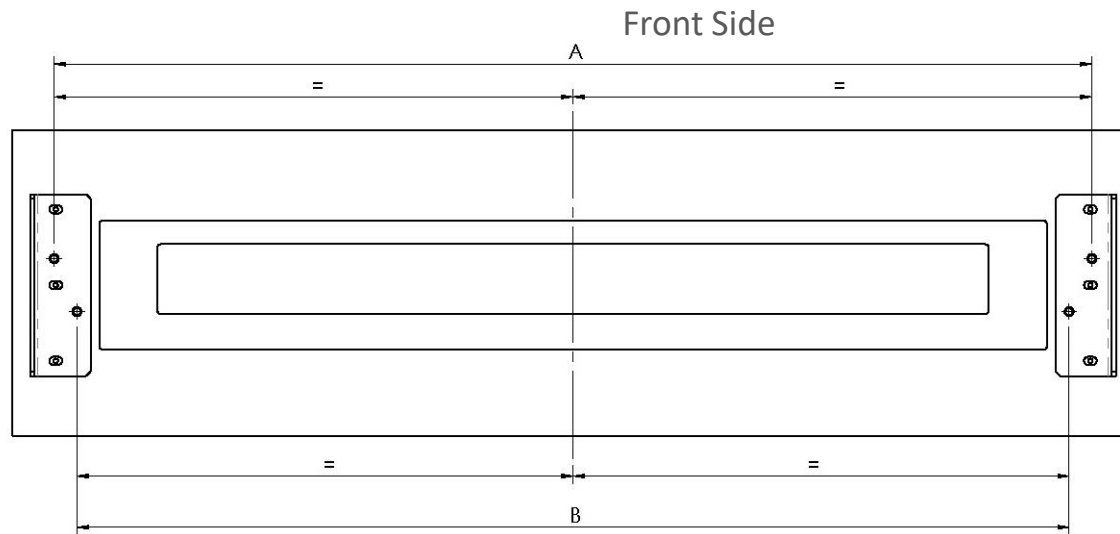


Mount the table brackets below the table using the holes indicated on the corresponding Pattern Hole drawing. The screws (x6) are not supplied; The weight of the monitor is up to 25Kg.
PAY ATTENTION THAT THE BRACKETS ARE MOUNTED IN THEIR CORRESPONDING SIDE

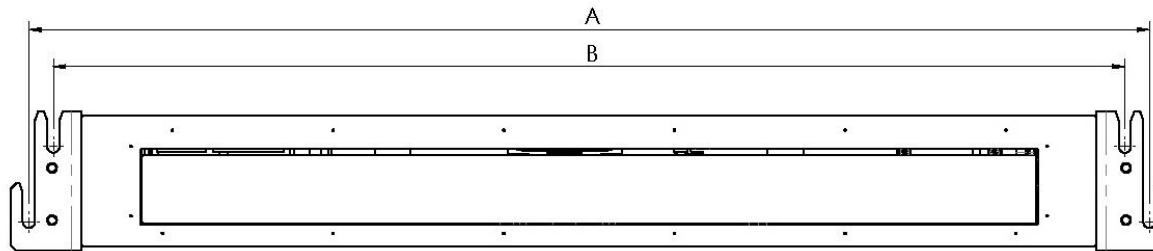


Mount the monitor brackets on their corresponding side using the supplied screws

Mount the vertical adjustment screws (2+2) on to the monitor bracket so that the tip of the screw is flushed with the upper side of the monitor bracket.



View from below the table



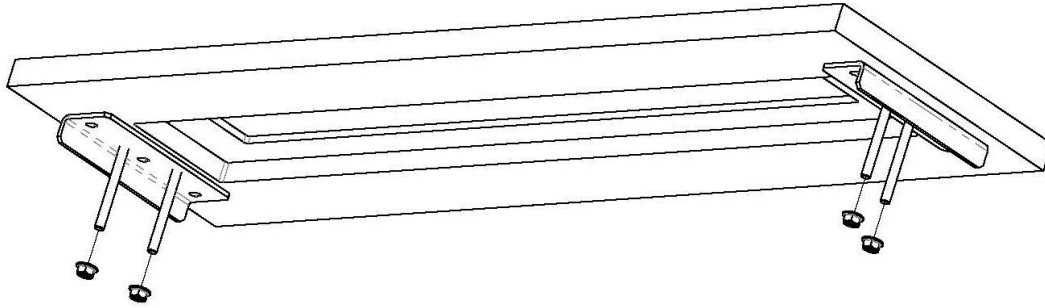
View from above the monitor

Front Side

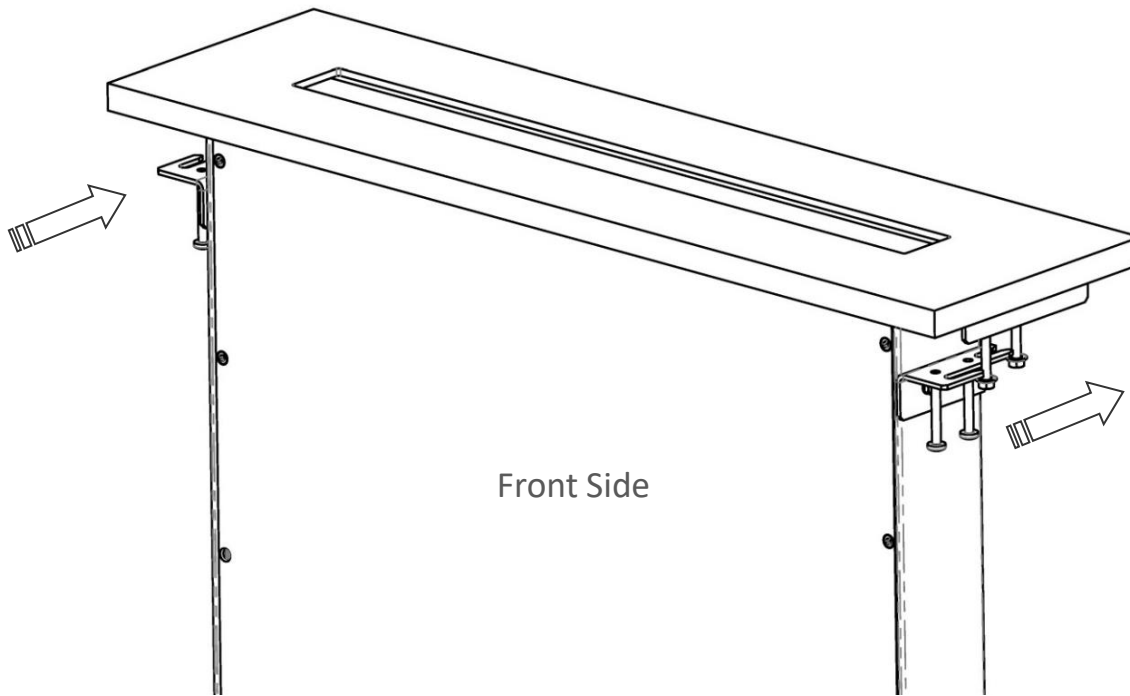
Dimensions A and B in table brackets and in monitor brackets must be the same (+ -1mm).

If adjustment is necessary loosen 3+3 Table bracket screws, keeping always symmetry regarding to the monitor hole in the table. Subsequently, tighten the table bracket screws.

Front Side

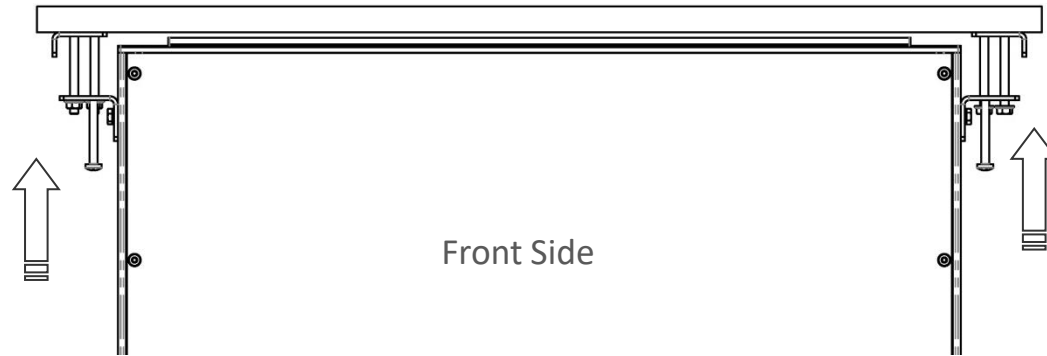


Mount 2+2 nuts on to both table brackets as indicated on the drawing.

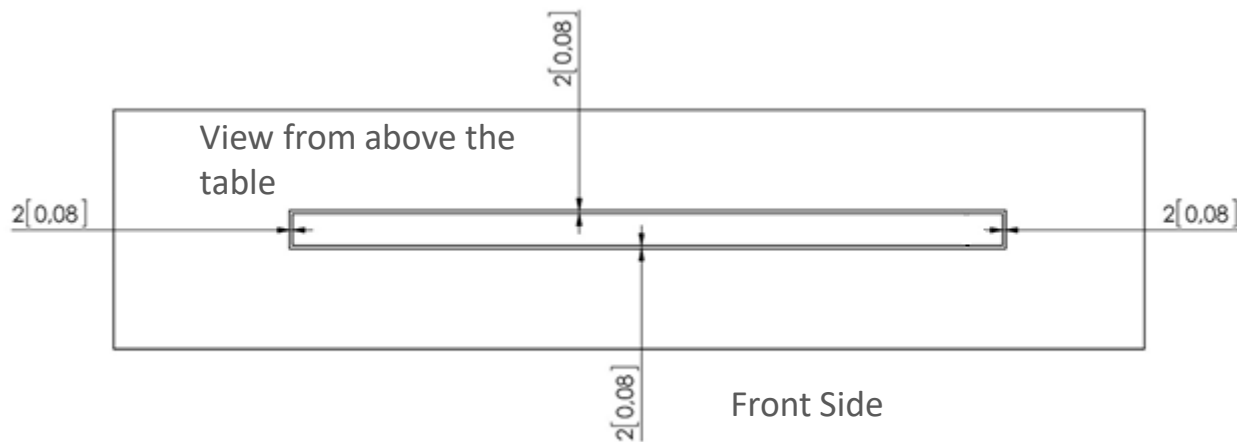


Front Side

Hang the monitor above nuts



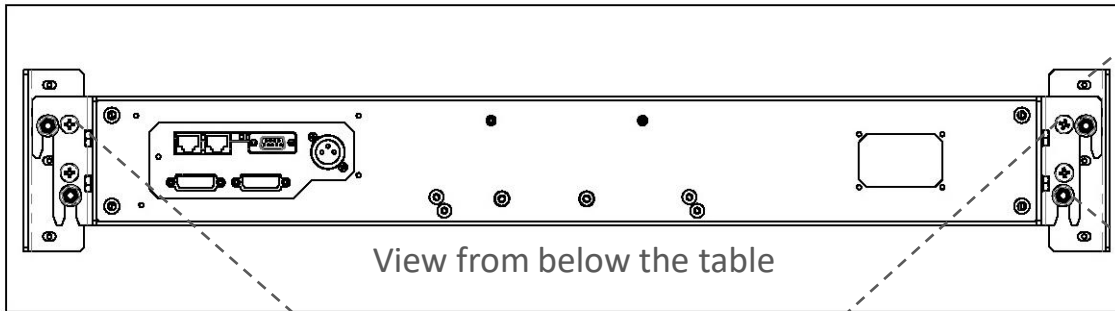
Tighten each nut gradually until the monitor surface is levelled with the table surface.



Air gap around the monitor have to be 2mm [0,08]. Otherwise the monitor could come in contact with the table while opening and be damaged

In case fine centering of the monitor is necessary

Front Side



View from below the table

For adjusting the monitor to the left or right loosen the table screws half a turn and centre the monitor. When the monitor is centred tighten the six screws.



For adjusting the monitor closer or further away from the table edge loosen the four nuts half a turn and move the monitor. When the monitor is centred tighten the four nuts.

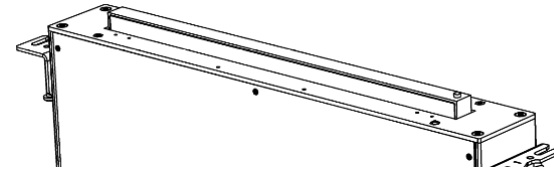


IMPORTANT:

To secure the monitor tighten the four vertical adjustment screws.

INTRODUCTION

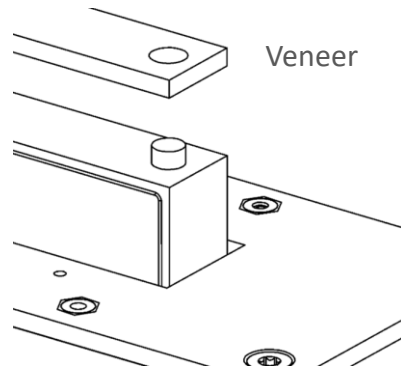
The DB2 and DB1Twin monitors are available in a special version that is prepared to be mounted from below the table with a Veneer finishing on the top of the monitor to match the table. The Veneer is not supplied. The Veneer option (V1, V2, V3) are available under request.



VENEER

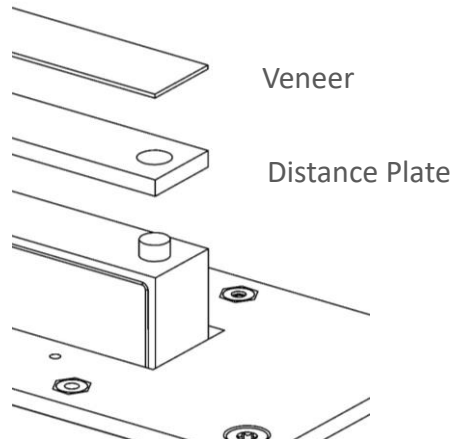
The Veneer can be placed in three ways:

Option1: DB2 V1
Veneer



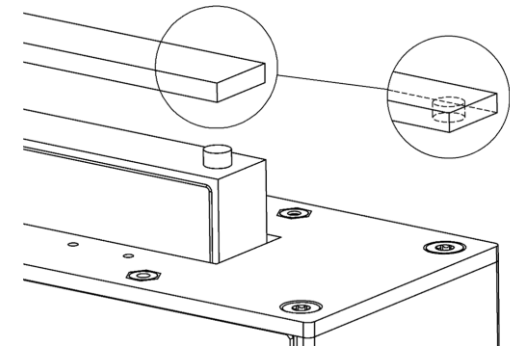
Option2: DB2 V2

Veneer + Distance Plate: For Veneers Thickness of 1mm [0,04] or less. It will be necessary a Distance Plate to hide the touch button copper cylinder.



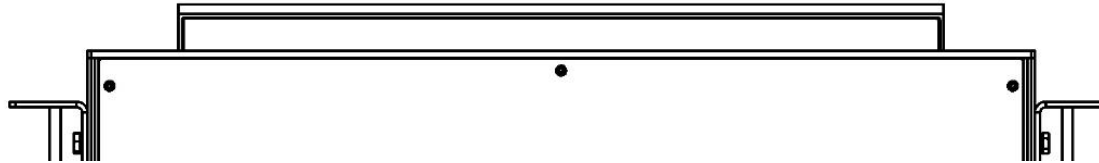
Option3: DB2 V3

Veneer: The veneer thickness must be 5mm [0.19]. A mechanized blind hole will be necessary to hide the touch button copper cylinder.



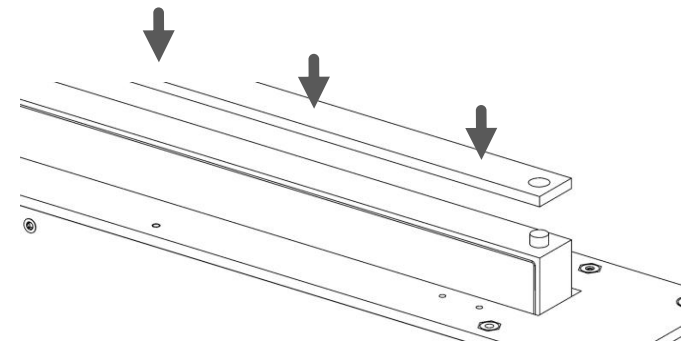
OPTION 1

- Double-side tape or glue used can't be thicker than 0,2-0,25mm [0.008-0.01]
1. Check if the Veneer fits perfectly with the monitor. To join both parts correctly it is important that the two surfaces are touching each other in the whole length. (To make easier the adjustment the hight of the touch button can be barely adjusted.)



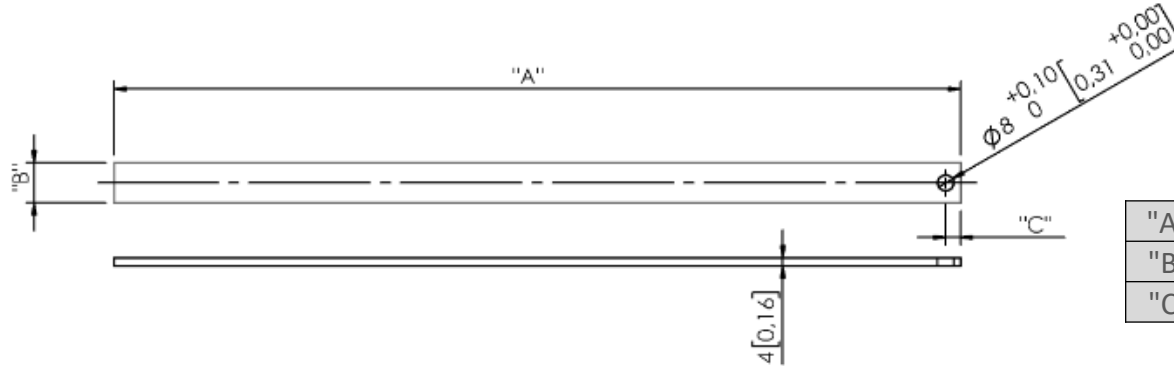
2. Clean the top surface of the metal monitor housing and the bottom surface of the Veneer.
3. Glue the Veneer. Double-side tape or glue can be used (depending on the kind of materials are going to be jointed).

The pressure applied must not exceed 1 Kg evenly distributed on monitor surface.



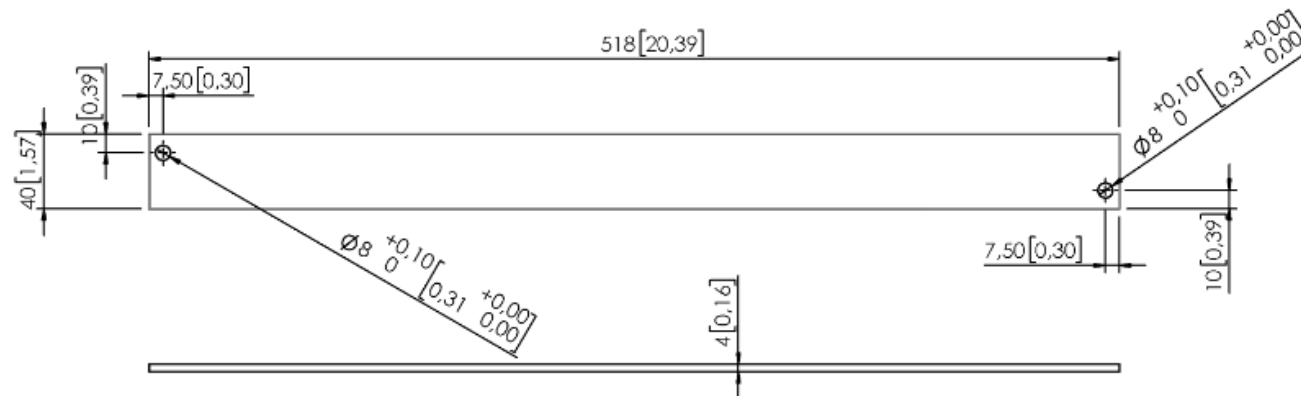
OPTION 1 VENEER CUT-OUT

DB2 Veneer cut-out



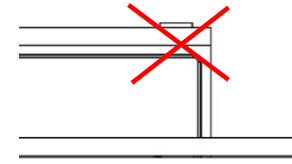
	AH10DB2	AH17DB2	AH22DB2	AH24DB2
"A"	258[10.15]	424[16.7]	518[20.39]	559,2[22]
"B"	17[0.67]	20[0.78]	20[0.78]	20[0.78]
"C"	8[0.31]	7,5[0.29]	7,5[0.29]	10[0.39]

DB1Twin Veneer cut-out

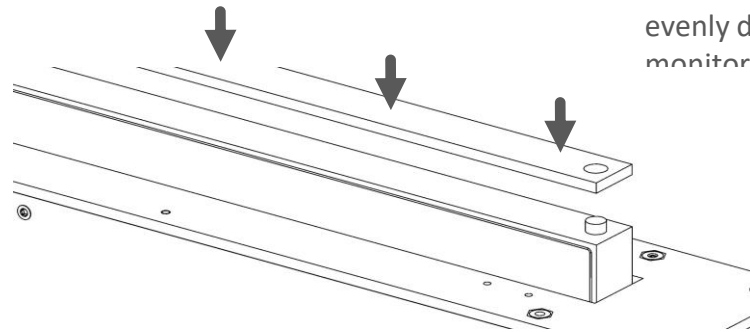


OPTION 2

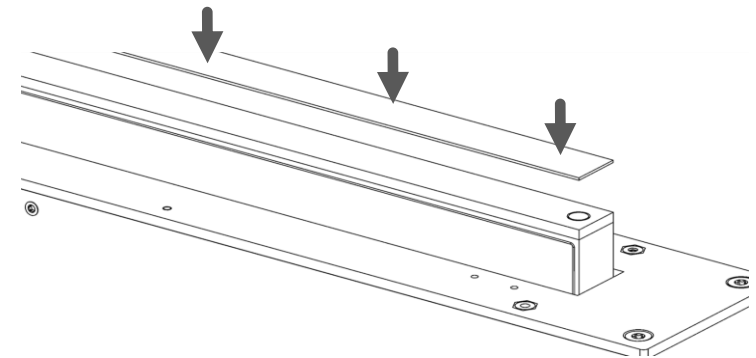
- Distance Plate material can't be conductor. Wood or DM are advisable.
 - Veneer material can't be conductor.
1. Check if the Distance Plate fits perfectly with the monitor. The copper cylinder can't project outwards from the Distance Plate surface. (To make easier the adjustment the hight of the copper cylinder can be barely adjusted.)
 2. Clean the top surface of the metal monitor housing and the bottom surface of the Distance Plate.
 3. Glue the Distance Plate. Double-side tape or glue can be used (depending on the kind of materials are going to be jointed). Double-side tape or glue used can't be thicker than 0,2-0,25mm [0.008-0.01]



4. Clean the top surface of the Distance Plate and the bottom surface of the Veneer.
5. Glue the Veneer. Double-side tape or glue can be used (depending on the kind of materials are going to be joint). The total thickness of Veneer + glue used can't be thicker than 1mm [0.04].

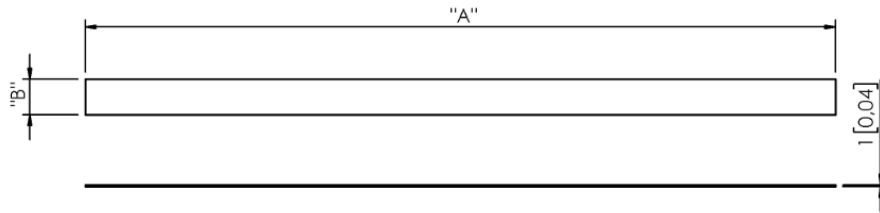


The pressure applied must not exceed 1 Kg evenly distributed on monitor surface.

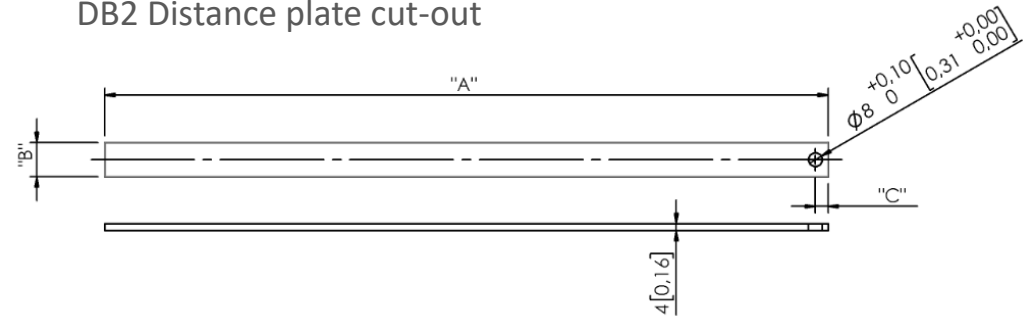


OPTION 2 VENEER CUT-OUT

DB2 Veneer cut-out

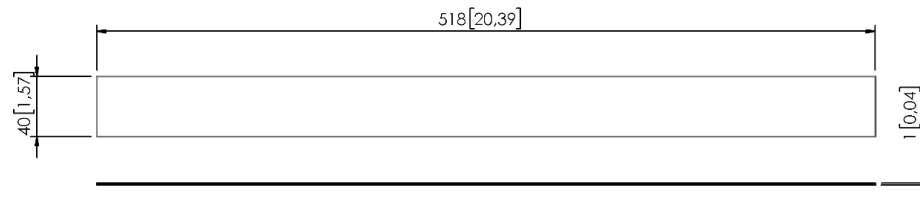


DB2 Distance plate cut-out

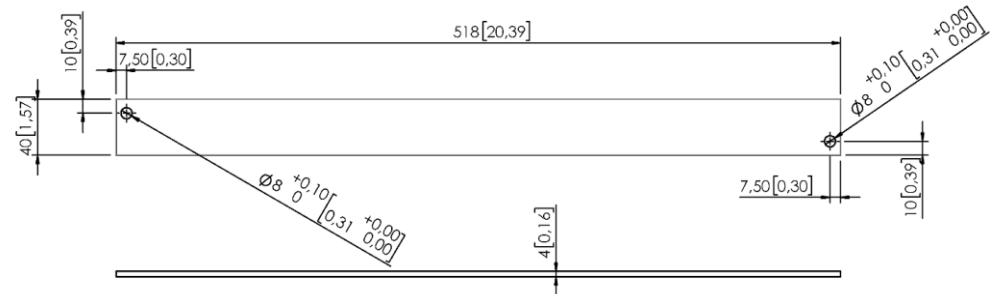


	AH10DB2	AH17DB2	AH22DB2	AH24DB2
"A"	258[10.15]	424[16.7]	518[20.39]	559,2[22]
"B"	17[0.67]	20[0.78]	20[0.78]	20[0.78]
"C"	8[0.31]	7,5[0.29]	7,5[0.29]	10[0.39]

DB1Twin Veneer cut-out

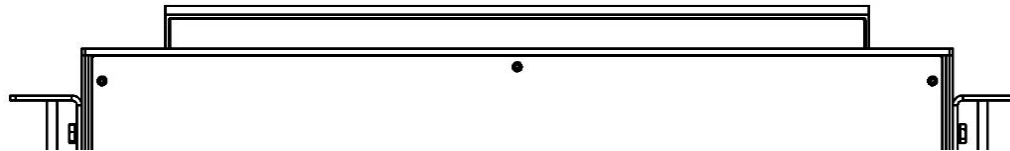


DB1Twin Distance plate cut-out

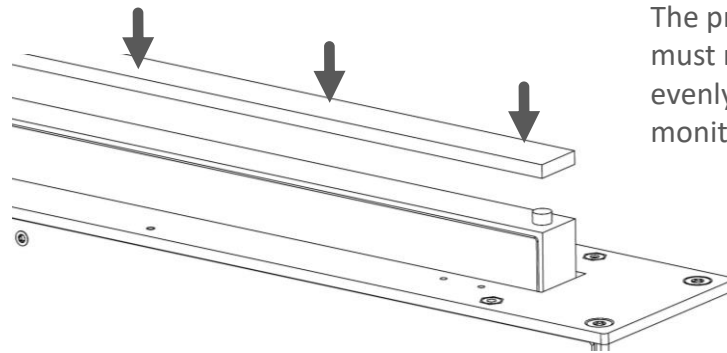


OPTION 3

- Veneer material can't be conductor.
1. Check if the Veneer fits perfectly with the monitor. To join both parts correctly it is important that the two surfaces are touching each other in the whole length. If there is a gap between the Veneer and the monitor, check if the hole depth in the Veneer is correct. (To make easier the adjustment the height of the copper cylinder can be barely adjusted.)



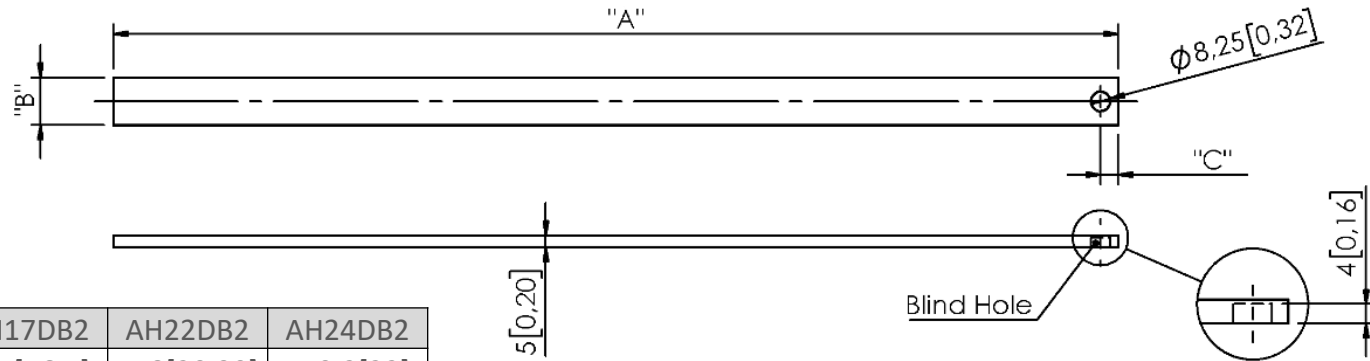
2. Clean the top surface of the metal monitor housing and the bottom surface of the Veneer.
3. Glue the Veneer. Double-side tape or glue can be used (depending on the kind of materials are going to be jointed). Double-side tape or glue used can't be thicker than 0,2-0,25mm [0.008-0.01]



The pressure applied must not exceed 1 Kg evenly distributed on monitor surface.

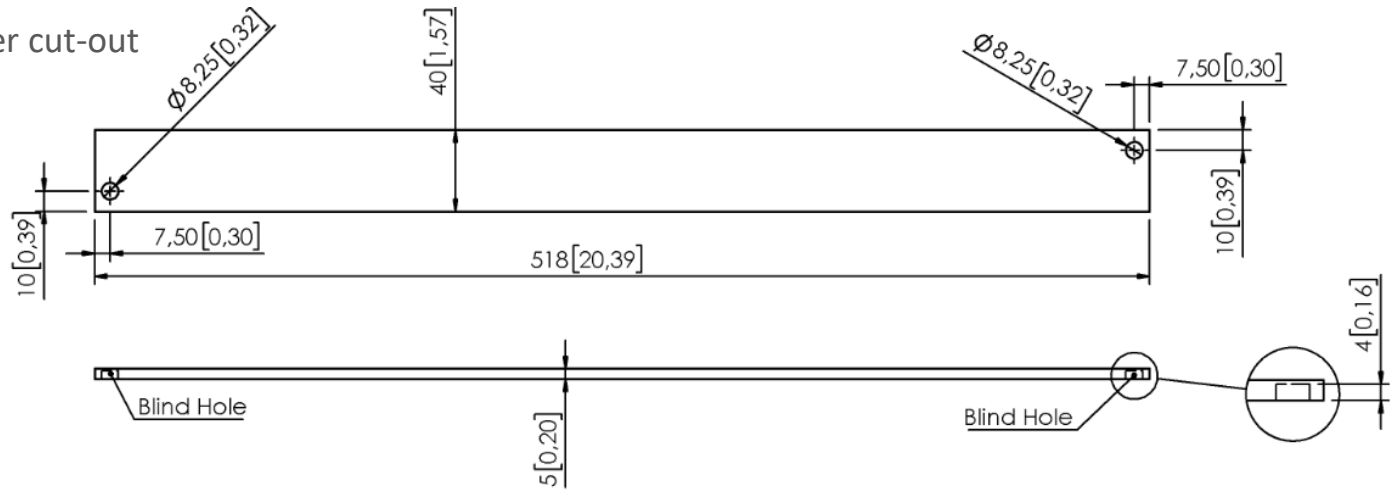
OPTION 3 VENEER CUT-OUT

DB2 Veneer cut-out



	AH10DB2	AH17DB2	AH22DB2	AH24DB2
"A"	258[10.15]	424[16.7]	518[20.39]	559,2[22]
"B"	17[0.67]	20[0.78]	20[0.78]	20[0.78]
"C"	8[0.31]	7,5[0.29]	7,5[0.29]	10[0.39]

DB1Twin Veneer cut-out





ARTHUR HOLM

is a registered brand of

ALBIRAL DISPLAY SOLUTIONS, SL

Fátima 25 ,08512 St. Hipòlit de

Voltregà (Barcelona – Spain)

tel. +(34) 938 502 376

www.arthurholm.com