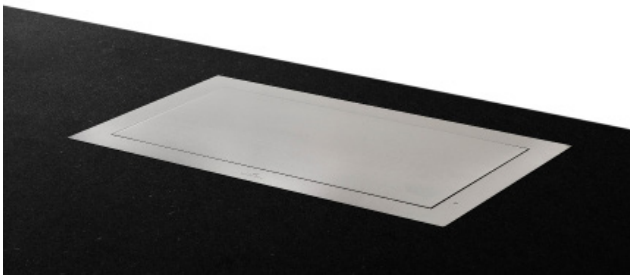
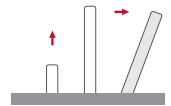


## DynamicX2KM

Aluminium retractable motorised monitor with Keyboard and Mouse compartment



### FEATURES

- Motorised keyboard and mouse compartments
- Connectivity for wired keyboard and mouse
- Automatic 20° inclination
- Interactive Setup Display
- Customisable cover plate
- Compact, space optimising and elegant solution
- HDCP compliant
- Energy saving design and Security system
- Easy installation
- Maintenance free and durable solution
- Serial control and remote diagnostic
- AH-AMMC Auto Mechanical Movement Calibration
- Ideal for tables, desks and lecterns

### GENERAL

DynamicX2 monitor is combined with an automated keyboard and mouse, creating a motorised automation system that lifts the keyboard and mouse at the same time the monitor is being raised. This combination offers the best possible quality Full HD screen with an elegant keyboard and mouse storage that converts into a work station by the touch of a button.

A safety mechanism stops the system in case of obstruction. The design is simple, with just 2 operation buttons or remote control. It is intuitive and easy to install. It offers improved table space and a neater environment.

DynamicX2 are elegant monitors built from a solid aluminium block and have a vertical motorised movement with automatic

20° inclination to ensure the best ergonomics, viewing angle and visibility. This automatic tilting system provides a fast and silent response. It is a reliable, maintenance-free solution. DynamicX2 have slightly curved edges for a contemporary and longstanding look.

The anodised aluminium housing can be customised in different colours and finishes. The standard top-table cover plate is made of brushed stainless steel. It can optionally be supplied with a matt finish or it can disappear inside the table when the product is prepared for underneath installation. DynamicX2 monitors are remotely controllable and diagnosable through the ERT interfaces in an easy and cost effective way.

ARTHUR HOLM

Albiral Display Solutions SL · Fàtima, 25 Sant Hipòlit de Voltregà 08512 Bcelona, Spain · +34 938 502 376 · marketing@arthurholm.com  
www.arthurholm.com

Arthur Holm is a registered brand of Albiral Display Solutions SL. Specifications subject to change without previous notice.

**Display**

Size	Full HD 21.5" TFT Active Matrix
Resolution	1920 (h) x 1080 (v)
Brightness	350 cd/m2
Contrast ratio	1000:1
Pixel	0.24975 (h) x 0.24975 (v) mm
Viewing angle	89° / 89° (L/R) / 89° / 89° (U/D)
Viewing area	476.064 (h) x 267.786 (v)
LED backlight lifespan	50.000 hrs
Response time	Tr 12ms, Tf 10 ms
Temperature (operating/storage)	Operating 0°C – +40°C Storage -20°C – +60°C

**Materials**

Frame	Anodised Aluminium
Glass	AR 2-side with an anti-reflective coating on the glass surface. Thickness: 3.0 ± 0.3 mm
Cover plate	Stainless steel or matt

**Connectivity**

Input signal	DVI-I (1 input) Digital / Analogue DVI-D (1 input) Digital HDCP compliant
RJ45 CAT6 (with loop)	Addressable RS422 monitor control by AHnet protocol
GPI (SubD9)	Up/Down control

**Control**

RJ45, RS-422 (I/O)	
Addressing	
Termination switch	
GPI	
IR Remote control (monitor adjustments):	1 / 5

**Movement's Control**

User interface on monitor	(Up/Down)
Remote	RS-422 I/O/GPI

**Electrical**

Low voltage (external power supply)	100-240Vac, 47/63Hz, 12Vdc
Power consumption	60W

**AUTOMATED KEYBOARD AND MOUSE COMPARTMENTS DIMENSIONS**

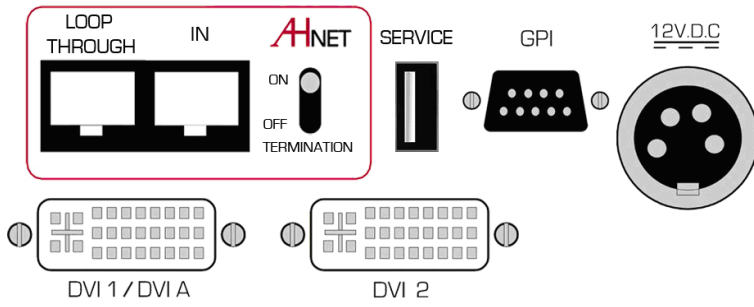
Max. Keyboard dimensions	285 x 120 x 15 mm [11,22 x 4,72 x 0,52"]
Max. Mouse dimensions	120 x 65 x 40 mm [4,72 x 2,56 x 1,57"]

**CERTIFICATIONS**

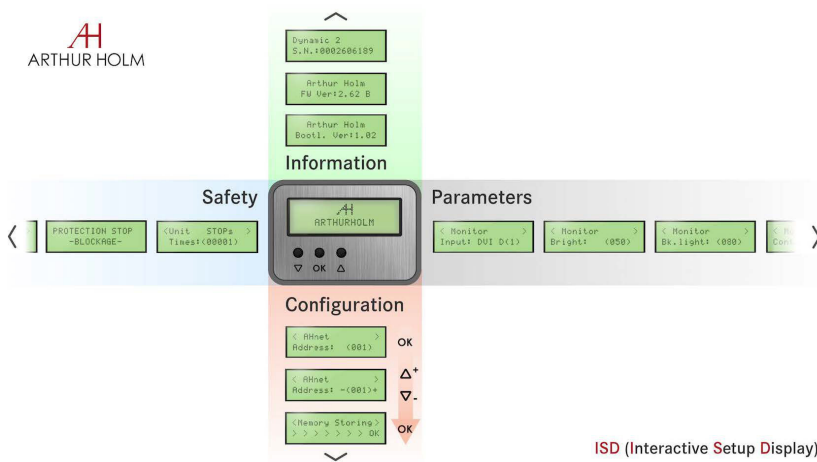
- CE

**WARRANTY**

- 5 years limited warranty
- 2 years general warranty



INTERACTIVE SETUP DISPLAY



ARCHITECTS SPECIFICATIONS

Professional electrically retractable 21.5” Full HD monitor with 20 degrees of automatic inclination. Low voltage. Monitor housing made of a solid aluminium block with a natural anodised finish and rounded corners. Front double sided anti-reflective 3 mm black-edged glass. Passive opening cover plate for enhanced reliability. DVI-I and DVI-D connectors, HDCP compliant inputs.

Automated keyboard and mouse compartment that lifts the keyboard and mouse up together with the screen.

Compatible with AHnet open protocol over RS-422, allowing individual remote control of up to 30 units per line over a daisy chain CAT-6 line and control up to 900 monitors using

the AHnet Control System. Additional control by means of the buttons integrated on the cover plate that can be activated or deactivated using the AHnet protocol. Easy to read Interactive Set-Up Display (ISD) LCD for address setup and status monitoring. Dual Pulse Time safety system that detects obstructions, stopping the unit. External power supply with 4-Pin XLR4 connector.

Bottom connectivity for easy access and removal of the monitor. Monitor housing total depth is 590mm plus additional spacing for connectors. Adjustable parameters through AHnet or ISD allowing calibration and adjustment of mechanics. Diagnostic readout on ISD for service and support.

Ref. Maximum dimensions of keyboard and mouse for DynamicX2 19"/22".

