

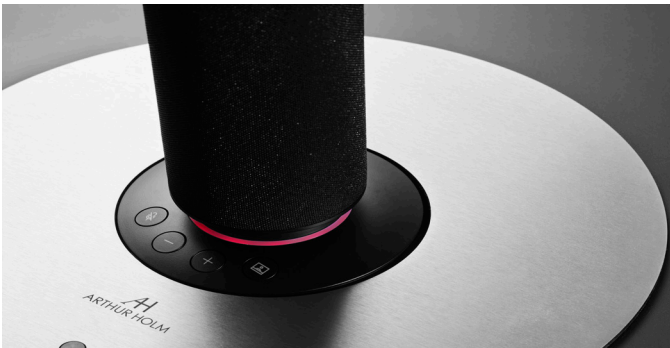


ARTHUR HOLM

AHDCL

DynamicCL

Universal motorized camera lift



Highlights

- Universal motorized lift for tabletop 360° cameras
- Integrated camera power and cable for laptop connectivity
- RS422 for remote control
- Brushed stainless steel cover plate

General

The DynamicCL is an universal motorized camera lift system that retracts the camera and its connection cable when not in use. It has been designed to hide table cameras when not in use. Table cameras often cover all the people at the table and are therefore located in a central position on the table. Consult the Arthur Holm website for camera compatibility.

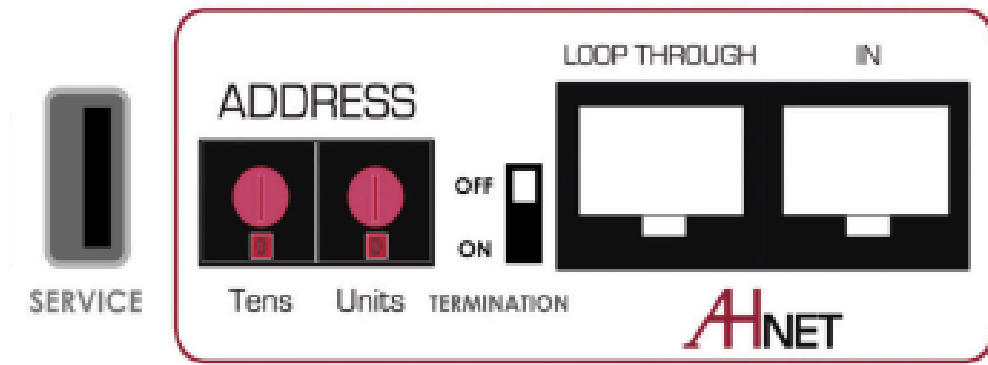
This universal motorized camera lift has integrated USB power for the camera, and USB connectivity for camera feed. The cable retracts with the camera, leaving the table free from any obstruction. It is also available without a retractable cable, as shown above, for fixed connectivity. All its movements can be controlled remotely via RS422 or locally on the device.

The DynamicCL has the well-known Arthur Holm build quality with a smooth and almost silent movement of the camera. It has a brushed stainless steel cover plate with a capacitive touch button to control the up and down motion.

ARTHUR HOLM

Albiral Display Solutions SL · Fàtima, 25 Sant Hipòlit de Voltregà 08512 Barcelona, Spain · +34 938 502 376 · marketing@arthurholm.com · www.arthurholm.com
Arthur Holm is a registered brand of Albiral Display Solutions SL. Specifications subject to change without previous notice.

Technology serving Design



Technical Specifications

Materials
Brushed stainless steel, Steel, Aluminium, Nylon
Finishing Materials
Cover plate in brushed stainless steel / option mat black / white
Black housing
Connectivity
USB Port for software update
XLR-4 input power

Motor Control	
Control Up/Down	Capacitive touch control sensor on cover plate
RJ45 CAT6	Addressable RS422 control by AHnet protocol
Electrical	
External power supply	100-240 Vac, 50/60Hz. 24VdC
Power consumption	90W
Dimensions	
Upper cover plate	Ø 255 x 3 mm [10.03" x 0.12"]
Housing below the table	183 x 159,6 mm x 50,7 [7.2" x 6.28"]

Certifications

- CE
- FCC

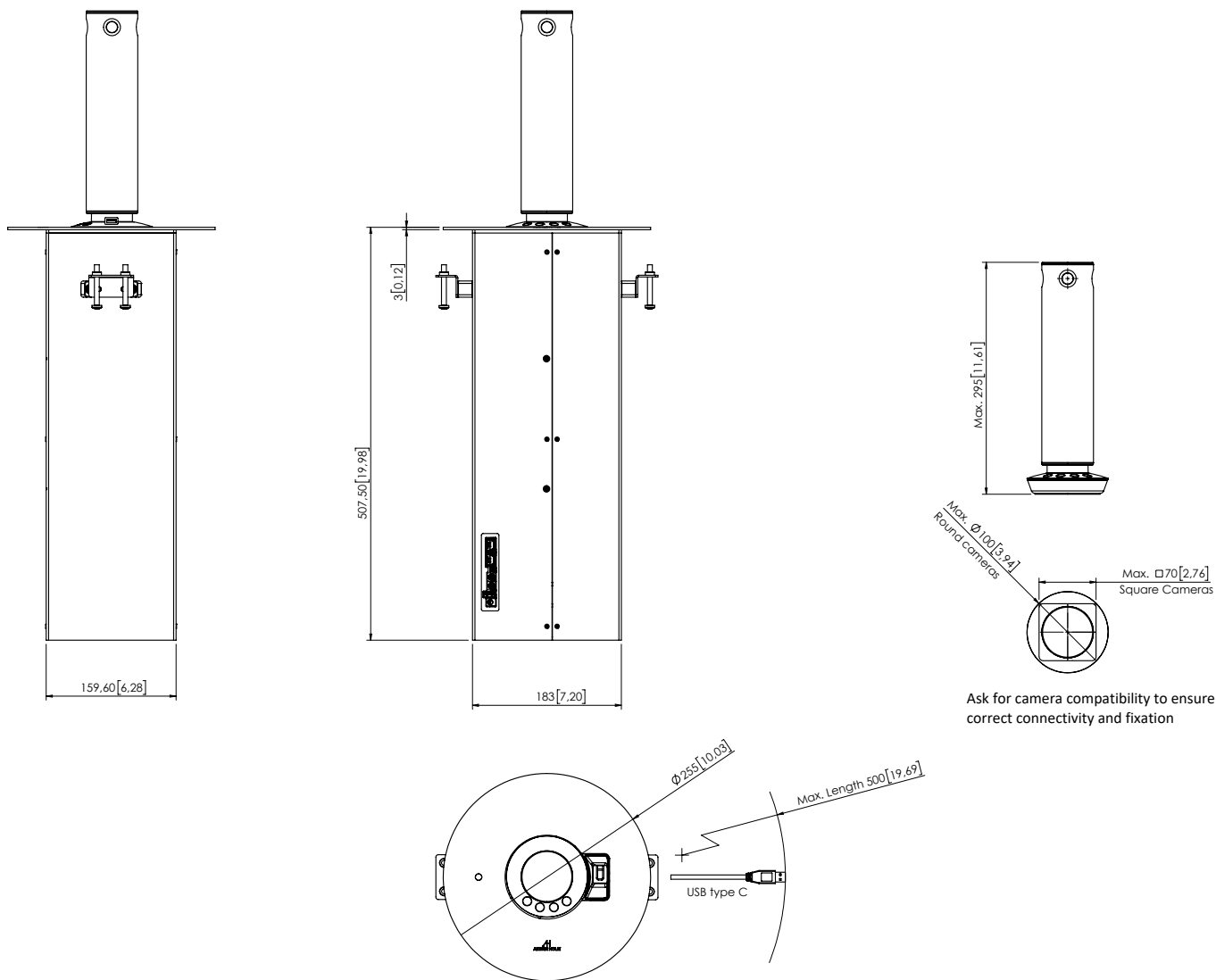
Consultants, architects and engineers specifications

The universal motorized camera lift system shall retract the camera and its connection cable when not in use.

This universal motorized camera lift shall integrate USB power for the camera, and USB connectivity for camera feed. The cable shall retract with the camera, leaving the table free from any obstruction.

All the movements shall be controlled remotely via RS422 or locally on the device.

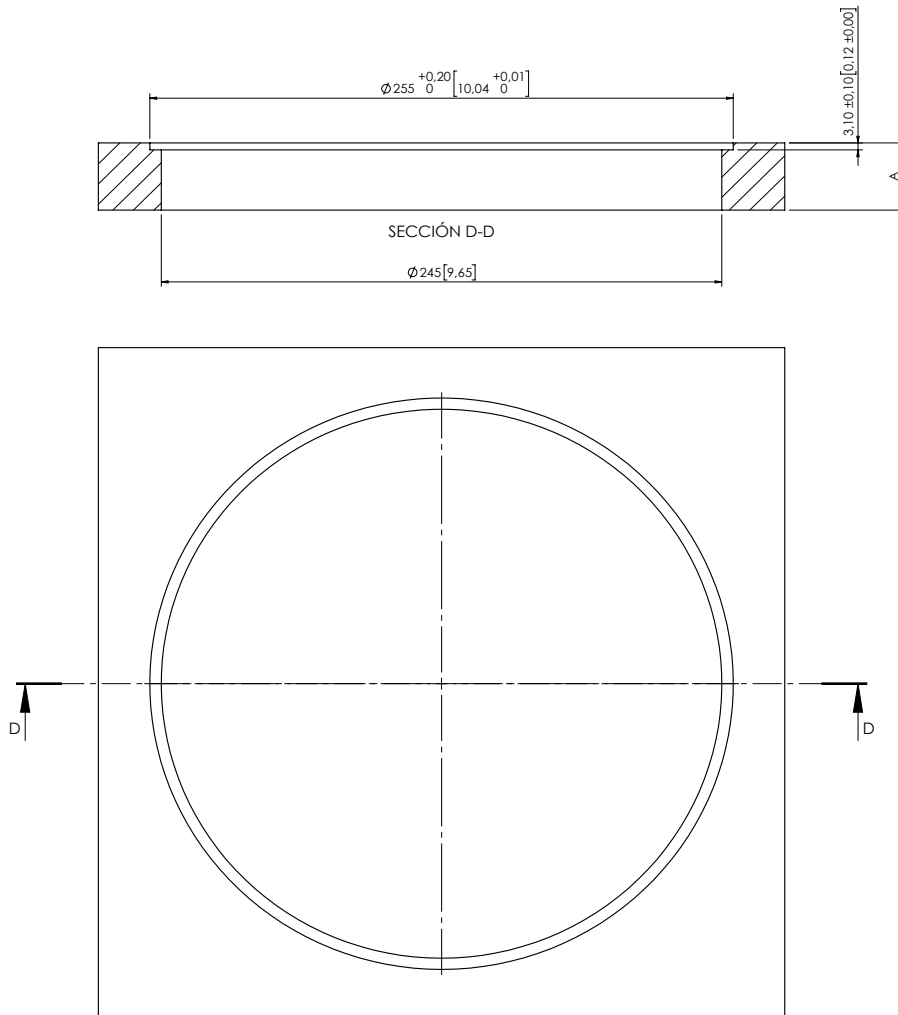
The lift shall provide a brushed stainless steel cover plate with a capacitive touch button to control the up and down motion.



ARTHUR HOLM

Albiral Display Solutions SL · Fàtima, 25 Sant Hipòlit de Voltregà 08512 Barcelona, Spain · +34 938 502 376 · marketing@arthurholm.com · www.arthurholm.com
 Arthur Holm is a registered brand of Albiral Display Solutions SL. Specifications subject to change without previous notice.

Technology serving Design



A= FROM 20 [0.79] TO 50 [1.97]