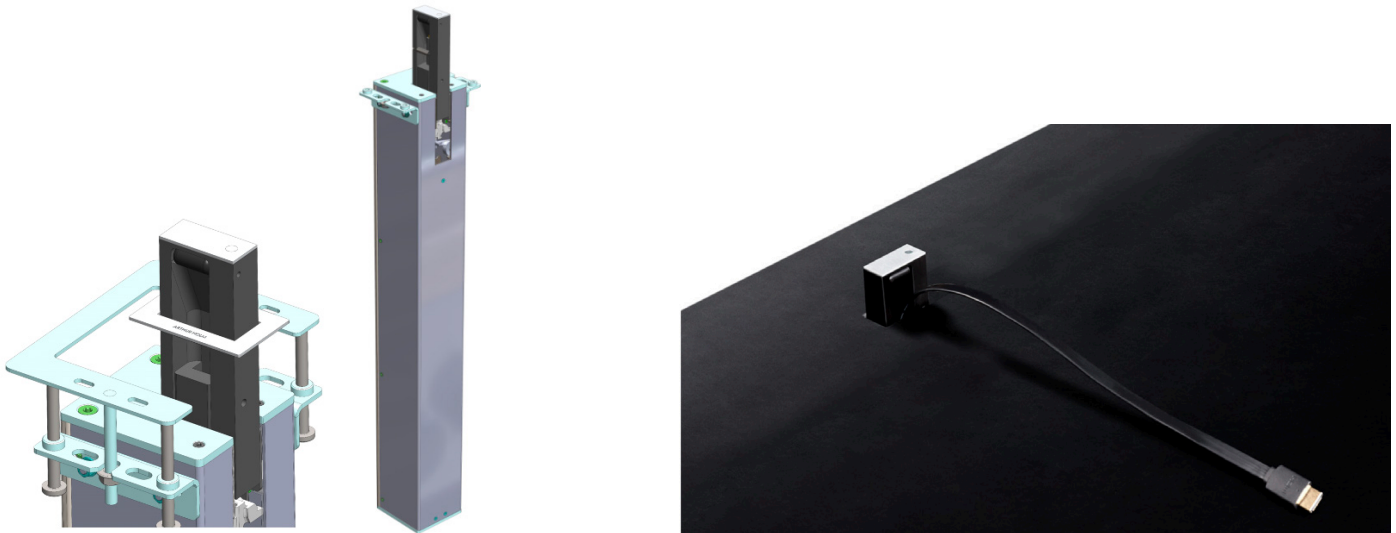


# DynamicCableRetract

HDMI motorised cable retraction system

---



## FEATURES

- Motorised cable retraction solution with HDMI cable
- Minimalistic design
- Designed to be discreet
- Capacitive sensor to deploy and retract the cable

## GENERAL

The patented Arthur Holm DynamicCableRetract, is a compact, elegant and robust motorised retractable cable solution that ejects a 600 mm HDMI cable by a touch of a button in a smooth and silent move.

The system has been designed to blend discreetly with the furniture and to give the user a professional AV solution with a long-life span. The Dynamic retractable cable can be locally controlled or remotely through RS-422 or through the AHlink app that gives you wireless access to the setup menu, basic control, serial number and factory settings, making the installation and service of the DynamicCableRetract easy and straight forward, without physically having to access to the interior of the table.

The AHlink app is available for Android and iOS.

---

### ARTHUR HOLM

Albiral Display Solutions SL · Fàtima, 25 Sant Hipòlit de Voltregà 08512 Barcelona, Spain · +34 938 502 376 · marketing@arthurholm.com · www.arthurholm.com  
Arthur Holm is a registered brand of Albiral Display Solutions SL. Specifications subject to change without previous notice.

Technology serving Design

**Materials**

Housing	Button on upper cover plate
Enclosure	Sandblasted Stainless steel / Steel / Aluminium / Polyamide/ Delrin

**Connectivity**

Ethernet AHnet commands

**Control**

Control Up/Down

RS422 I/O

AHlink

Ethernet AHnet commands

**Electrical**

External power supply	100-240Vac, 12Vdc
Power consumption	15W

**Mechanical**

Case Dimensions:

Top plate	20 x 44 mm [0.78" x 1.73"]
Housing below the table	80 x 674 x 84 mm [3.14" x 26.53" x 3.3"]
HDMI Cable	600 mm length (below the table 700 mm length)
Weight	3.75 Kg / 8.26 Lbs

**OPTIONS**

- Aluminium frame

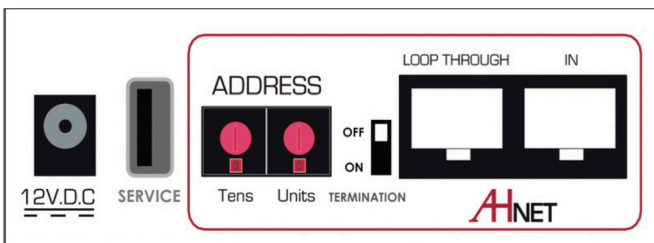
**CERTIFICATIONS**

- CE
- FCC

**WARRANTY**

- 2 years general warranty

**CONNECTIVITY PANEL**

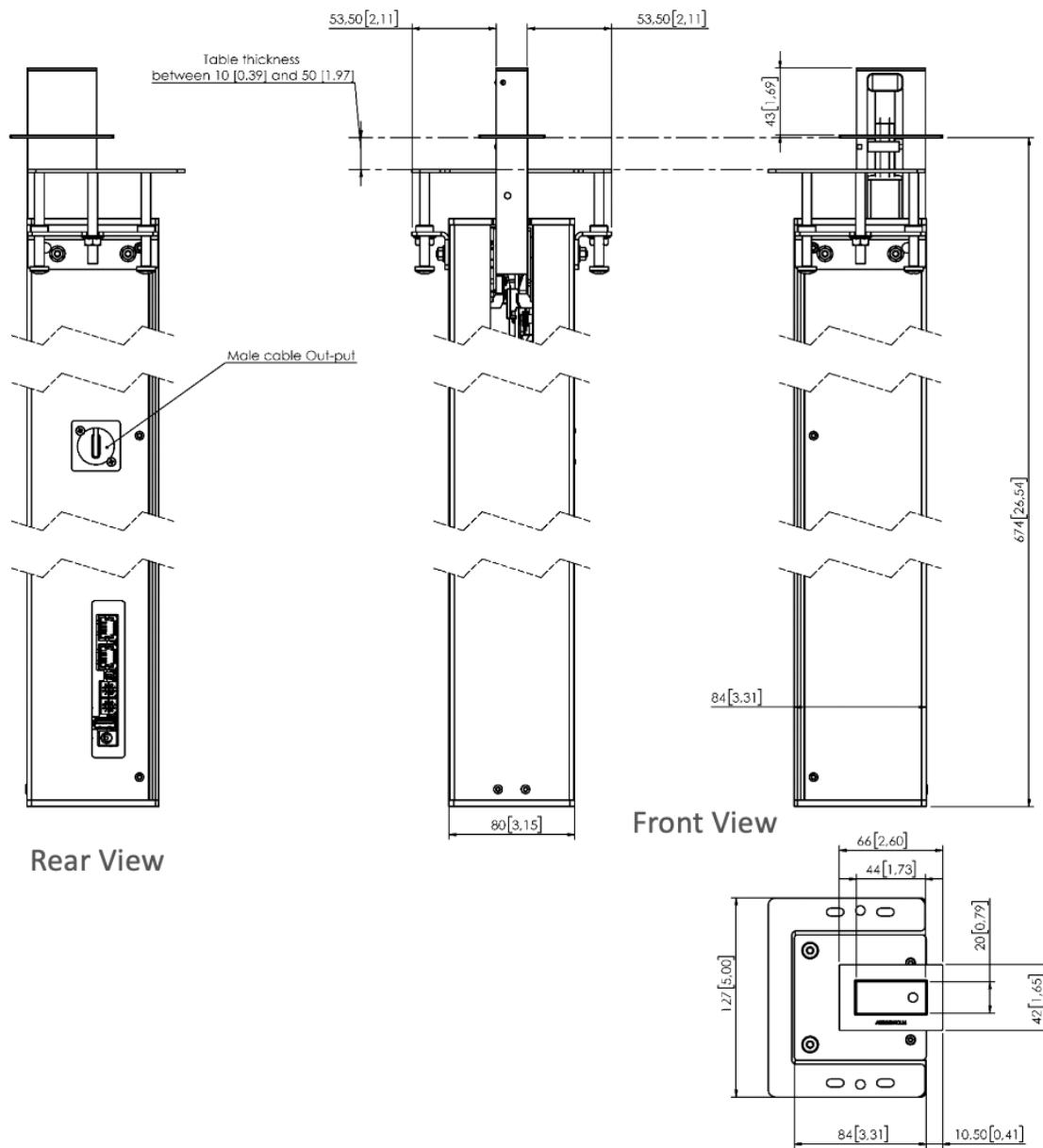


**CONSULTANTS, ARCHITECTS AND ENGINEERS SPECIFICATIONS**

The monitor shall allow its installation into furniture opening with a maximum width of 24 mm.

The system shall provide a capacitive sensor to deploy and retract a cable of 600 mm.

The system shall be controlled by AHnet (RS422) and a wireless app AHlink.



ARTHUR HOLM

Albiral Display Solutions SL · Fàtima, 25 Sant Hipòlit de Voltregà 08512 Barcelona, Spain · +34 938 502 376 · marketing@arthurholm.com · www.arthurholm.com  
 Arthur Holm is a registered brand of Albiral Display Solutions SL. Specifications subject to change without previous notice.

Technology serving Design